

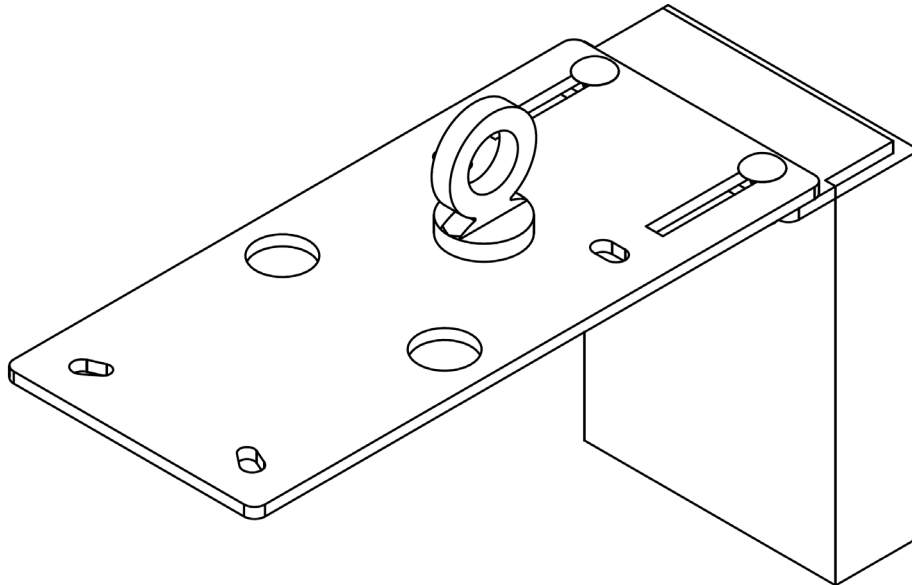


Vestil Manufacturing Corp.

2999 North Wayne Street, P.O. Box 507, Angola, IN 46703
 Telephone: (260) 665-7586 -or- Toll Free (800) 348-0868
 Fax: (260) 665-1339

Web: www.vestilmfg.com e-Mail: info@vestil.com

MINI-SH Counterweight Adaptor for MINI-2, MINI-4, MINI-7, & MINI-10 Hoists Instruction Manual



Receiving Instructions

After delivery, remove the packaging from the product. Inspect the product closely to determine whether it sustained damage during transport. If damage is discovered, record a complete description of it on the bill of lading. If the product is undamaged, discard the packaging.

NOTE: The end-user is solely responsible for confirming that product design, use, and maintenance comply with laws, regulations, codes, and mandatory standards applied where the product is used.

Technical Service & Replacement Parts

For answers to questions not addressed in these instructions and to order replacement parts, labels, and accessories, call our Technical Service and Parts Department at (260) 665-7586. The department can also be contacted online at http://www.vestilmfg.com/parts_info.htm.

Electronic Copies of Instruction Manuals

Additional copies of this instruction manual may be downloaded from <https://www.vestil.com/page-manuals.php>.

Table of Contents

Signal Words.....	2
Safety Instructions.....	2
Assembly.....	3
Counterweight Adjustment.....	3
Record of Satisfactory Condition.....	3
National Standards.....	3
Specifications.....	4 – 5
Exploded Views and Bills of Materials.....	6 – 7
Labeling Diagram.....	7
Limited Warranty.....	8

SIGNAL WORDS

This manual uses SIGNAL WORDS to indicate the likelihood of personal injuries, as well as the probable seriousness of those injuries, if the product is misused in the ways described. Other signal words call attention to uses of the product likely cause property damage. The signal words used appear below along with the meaning of each word.



Identifies a hazardous situation which, if not avoided, WILL result in DEATH or SERIOUS INJURY. Use of this signal word is limited to the most extreme situations.



Identifies a hazardous situation which, if not avoided, COULD result in DEATH or SERIOUS INJURY.



Identifies practices likely to result in product/property damage, such as operation that might damage the crane.

SAFETY INSTRUCTIONS

Vestil strives to identify foreseeable hazards associated with the use of its products. However, no manual can address every conceivable risk. The most effective way to avoid injury is to exercise sound judgment when assembling, using, inspecting, or maintaining this product. A copy of this manual should be available to persons who use or maintain this product at all times. Anyone who uses this product must be made aware that a copy of the manual is available and where to find it.



ELECTROCUTION CAN RESULT IN SERIOUS PERSONAL INJURIES OR DEATH.

- DISCONNECT POWER AND LOCKOUT / TAGOUT DISCONNECTING MEANS BEFORE REMOVING COVER OR SERVICING THIS EQUIPMENT.
- DO NOT OPERATE THIS HOIST WITHOUT COVER IN PLACE.
- DO NOT USE THE HOIST IF WIRING IS EXPOSED, E.G. IF THE HANDHELD CONTROLLER IS DAMAGED.



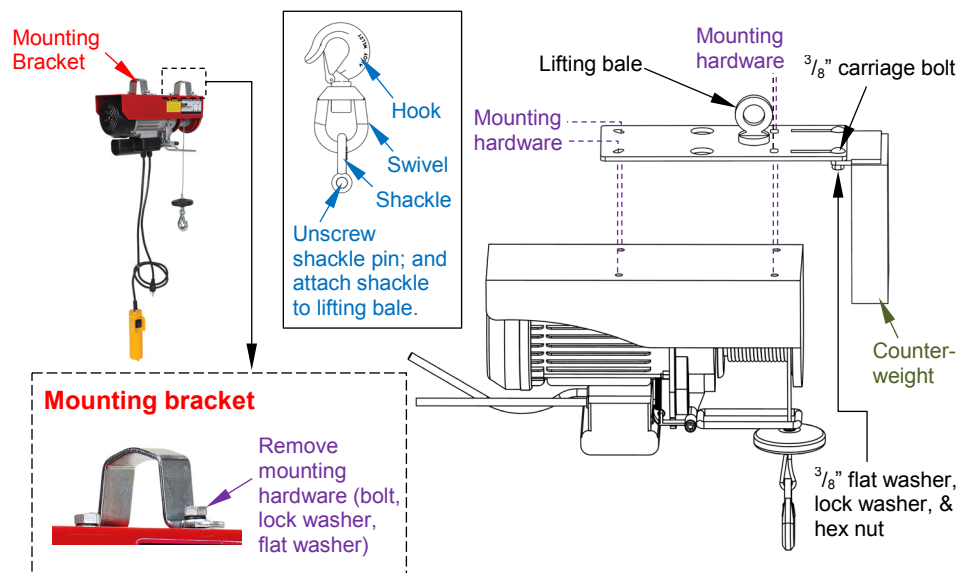
Improper or careless assembly, installation, or use could result in serious personal injuries or death.

- Read and understand the entire manual before assembling, using, inspecting, or servicing the hoist or adaptor.
- Read the manual whenever necessary to refresh your understanding of proper use and maintenance procedures.
- DO NOT install the adaptor without the counterweight. The hoist will not balance correctly without the counterweight.
- DO NOT modify the product in any way UNLESS you first obtain written approval from Vestil. Unapproved modifications automatically void the [Limited Warranty](#) and might make the hoist unsafe to use.
- DO NOT exceed the capacity of the **hoist or the adaptor**, whichever is **smaller**. For example, if the capacity of your hoist is 200 lb. and the capacity of the adaptor is 440 lb., then the maximum load that can be applied to the hoist is 200 lb. The weight of the hoist decreases the capacity of the adaptor, i.e. subtract hoist weight from the capacity of the adaptor!
- Always make sure that the shackle pin is secure before applying a load to the load hook. **Tighten the pin before each use**. The shackle pin is identified in the [Exploded Views](#) on p. 6 or 7.
- Make sure that the hoist is balanced when suspended.
- Inspect the hoist and the adaptor before each use. Compare your inspection results to the [Record of Satisfactory Condition](#). Remove the adaptor from service if it is not in [satisfactory condition](#). DO NOT return the adaptor to service until it is fully restored to satisfactory condition.
 1. Confirm that the adaptor plate is solidly attached to the top of the hoist. Check all hardware (bolts, washers, lock washers) used to fasten the adaptor to the hoist. Make sure that every bolt is tight and undamaged. The adaptor plate should be square a rigid, i.e. not cracked or bent.
 2. Examine the hook, shackle, and shackle pin. Check each component for damage, such as cracks and distortions.
 3. Make sure that the lifting bale is undamaged.
 4. Inspect the counterweight. Verify that the carriage bolts, washers, lock washers, and nuts are tightly fastened. Check welds for damage.
- DO NOT use hoist before reading entire manual.
- DO NOT lift loads weighing more than the rated load / capacity.
- DO NOT exceed the rated load of your crane, hoist, adaptor, or rigging, whichever is **smallest**.
- Avoid load swing! DO NOT operate the hoist UNLESS the load is centered beneath it.
- DO NOT operate the hoist with twisted, kinked, or damaged chain/rope.
- DO NOT use the hoist if it is damaged or malfunctioning.
- DO NOT use without normally functioning hook latch.
- DO NOT use this hoist to lift people.
- DO NOT lift loads over people.
- DO NOT remove or obscure any label / tag attached to the hoist.
- DO NOT use the load cable/chain as a sling.
- DO NOT side load the hoist. Side loading causes the load to swing as it leaves the ground.
- DO NOT leave suspended loads unattended.

ASSEMBLY

Attach the counterweight adaptor to the top surface of your MINI-2, MINI-4, MINI-7, or MINI-10 cable hoist.

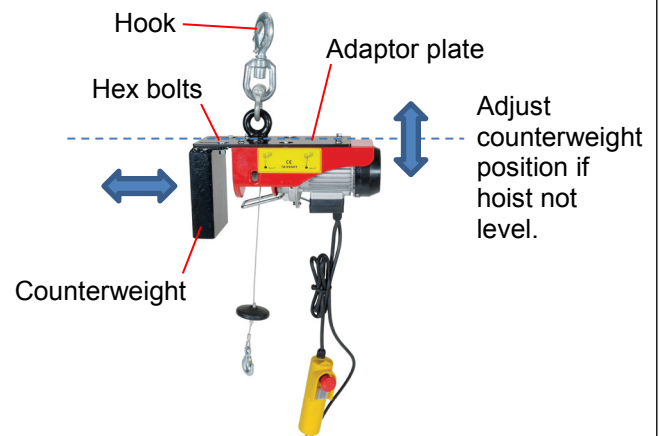
- Remove the mounting brackets from the hoist.
- Align the bolt holes in the adaptor plate with the bolt holes in the hoist.
- Install the mounting hardware (bolts, lock washers, washers) and tighten it.
- Press the counterweight against the end of the hoist. Attach it to the adaptor plate with $\frac{3}{8}$ " – 16 x 1" carriage bolts. Slide a $\frac{3}{8}$ " flat washer, $\frac{3}{8}$ " lock washer, and hex nut onto the end of both bolts. Tighten the nuts.
- Unscrew the shackle pin. Attach the shackle (with hook) to the lifting bale by reinstalling the shackle pin.



COUNTERWEIGHT ADJUSTMENT

Suspend the hoist from the hook of the adaptor. Make sure that the hoist is level. If the hoist is not level, adjust the position of the counterweight:

1. Loosen, but do not remove, the $\frac{3}{8}$ " – 16 x 1" hex bolts that fasten the counterweight to the adaptor plate.
2. If the motor side of the hoist is lower than the counterweight:
 - a. Slide the counterweight away from the hoist until the hoist balances.
 - b. Retighten the hex nuts.
3. If the counterweight side of the hoist is lower than the motor:
 - a. Slide the counterweight towards the hoist until the hoist balances.
 - b. Retighten the hex nuts.



RECORD OF SATISFACTORY CONDITION (THE "RECORD")

After attaching the adaptor to your hoist and before putting the hoist into service, record the condition and appearance of each of the adaptor elements (mounting plate, counterweight weldment, lifting bale, shackle, swivel hook, and all fasteners). Thoroughly photograph the hoist and adaptor from multiple angles. Include close range photographs of the hook, swivel, shackle, lifting bale, fasteners and all labeling. Collate all photographs and writings into a single file. This file is a record of the adaptor in satisfactory condition. Compare the results of all inspections (see [Safety Instructions](#) on p. 2) to this Record to determine whether the adaptor is in satisfactory condition. Do not use the hoist unless it and the adaptor are in satisfactory condition. Purely cosmetic changes, like damaged paint or powdercoat, are not changes from satisfactory condition. However, touchup paint should be applied as soon as damage occurs.

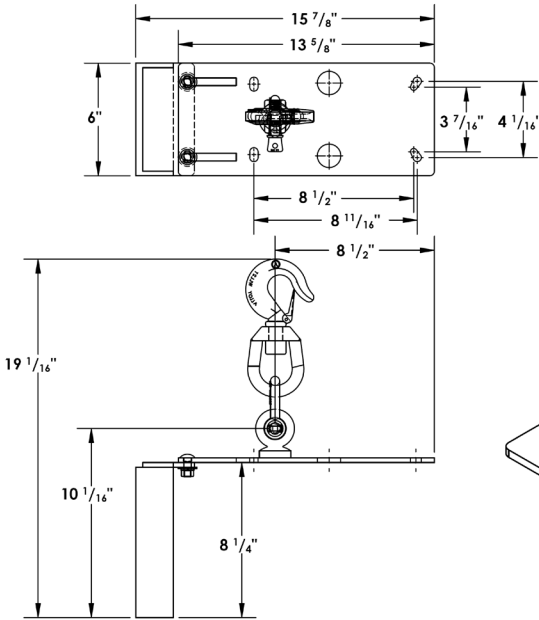
NATIONAL STANDARDS

This product is a counterweight adaptor specifically and exclusively designed for use with Vestil Manufacturing MINI-series overhead hoists. ANSI/ASME standard B30.16, "Overhead Underhung and Stationary Hoists," (the "Standard") applies to MINI-series hoists. You *should* acquire a copy of the latest version of the Standard by visiting the following webpage of the ASME.org website: <https://www.asme.org/codes-standards/find-codes-standards/b30-16-overhead-underhung-stationary-hoists>. Follow all installation, use, and maintenance/care instructions provided in the Standard as well as all other provisions directed to hoist owners and users. If any content in this manual conflicts with any recommendations or mandatory provisions in the Standard, apply the provisions from the Standard. Vestil encourages you to immediately contact [Technical Service](#) if you discover inconsistencies between this manual and the Standard. Contact information is provided on the cover page of this manual.

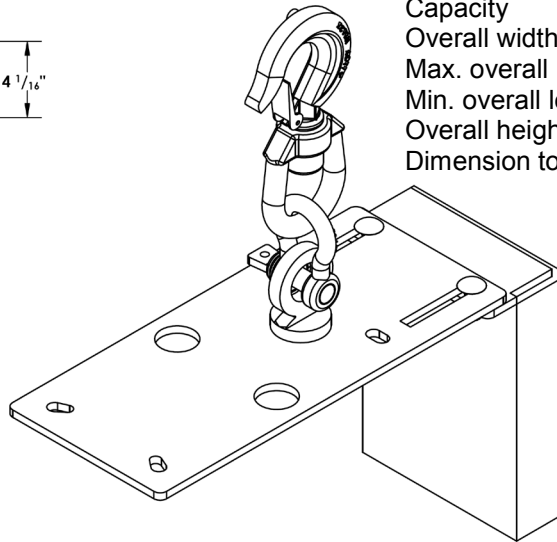
SPECIFICATIONS

Specifications documents for MINI-series cable hoists and counterweight adaptors are available online to anyone who visits the Vestil website. Specifications include dimensions, net weight, and capacity information. Acquire the appropriate specifications document by opening this webpage: <https://www.vestil.com/product.php?FID=555>. Click the "Specifications" tab. Scroll the page to the entry for the product you purchased. Click the button in the "PDF" column that looks like a pencil inside a blue-bordered box. A PDF file will open. This file is the specifications document. Print a copy of the document as soon as your hoist is ordered. Keep the document with this manual. Compare the information in the specifications document to the diagrams and data on page 4 or 5. If the information on p. 4 or 5 differs from the specifications document you printed from the website, or if you encounter difficulties while trying to obtain a copy of the online specifications document, contact [Technical Service](#). Contact information is provided on the cover page of this manual.

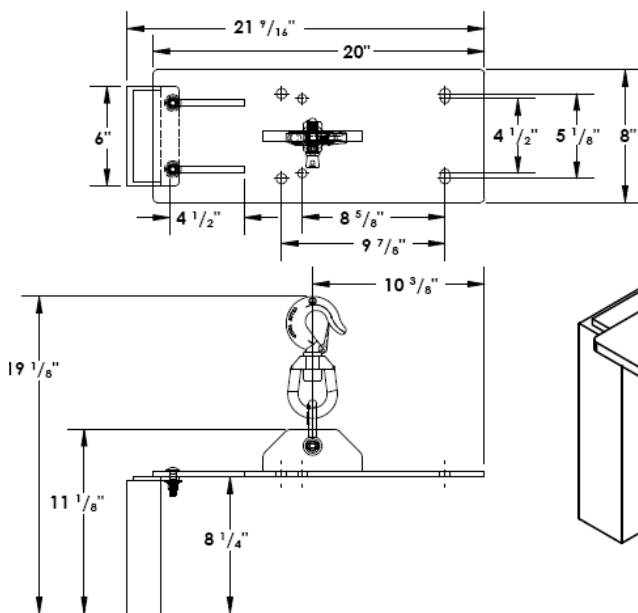
MINI-SH-2 (49-007-014): Attaches to MINI-2 Hoist



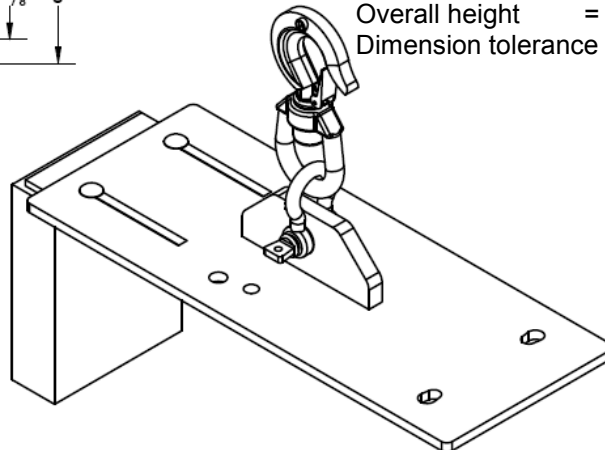
- Net weight = 37.5 lb. (17.0kg)
- Capacity = 440 lb. (200kg)
- Overall width = 6" (15.2cm)
- Max. overall length = 15 7/8" (40.3cm)
- Min. overall length = 13 5/8" (34.6cm)
- Overall height = 19 1/16" (48.4cm)
- Dimension tolerance = ± 1/4" (±0.64cm)



MINI-SH-7 (49-007-036): Attaches to MINI-7 Hoist

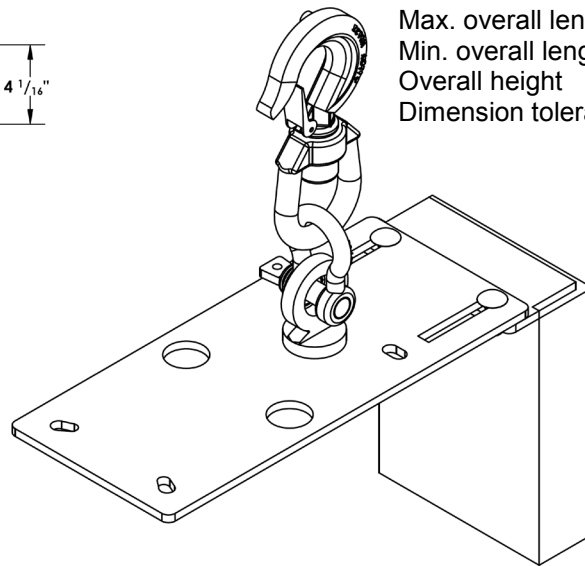
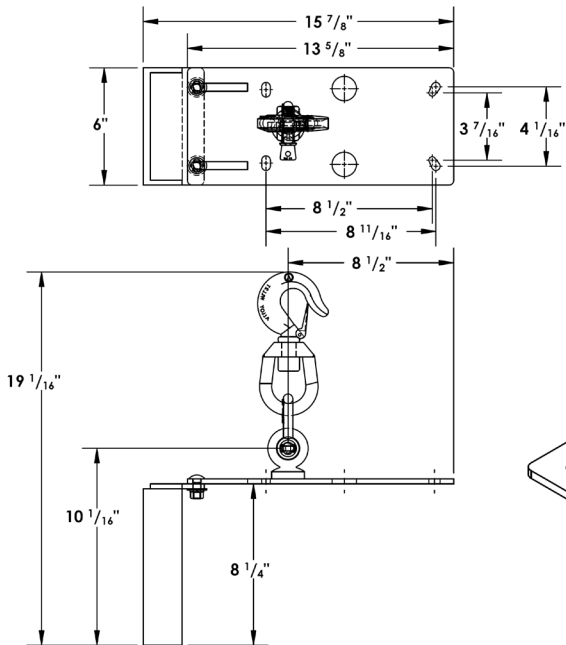


- Net weight = 50 lb. (22.7kg)
- Capacity = 1500 lb. (681.8kg)
- Overall width = 8" (20.3cm)
- Max. overall length = 21 9/16" (54.8cm)
- Min. overall length = 20" (50.8cm)
- Overall height = 19 1/8" (48.6cm)
- Dimension tolerance = ± 1/4" (±0.64cm)



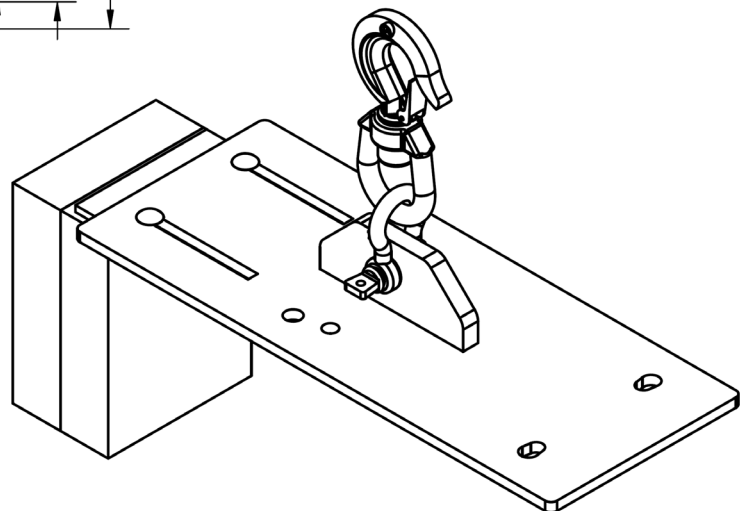
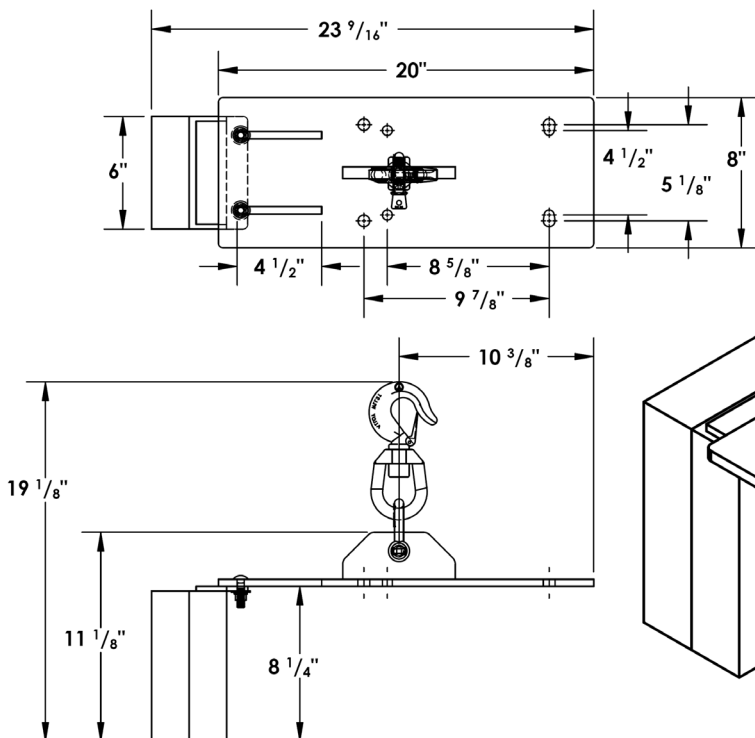
MINI-SH-4 (49-007-014-001): Attaches to MINI-4 Hoist

Net weight = 37.5 lb. (17.0kg)
 Capacity = 880 lb. (400kg)
 Overall width = 6" (15.2cm)
 Max. overall length = 15⁷/₈" (40.3cm)
 Min. overall length = 13⁵/₈" (34.6cm)
 Overall height = 19¹/₁₆" (48.4cm)
 Dimension tolerance = ±¹/₄" (±0.64cm)

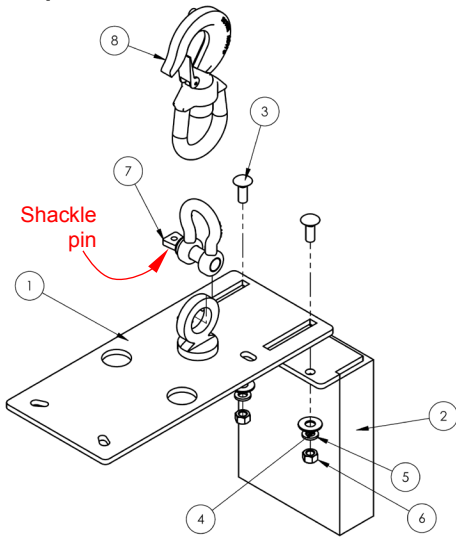


MINI-SH-10 (49-007-035): Attaches to MINI-10 Hoist

Net weight = 77 lb. (35kg)
 Capacity = 2000 lb. (909.1kg)
 Overall width = 8" (20.3cm)
 Max. overall length = 23⁹/₁₆" (59.8cm)
 Min. overall length = 20" (50.8cm)
 Overall height = 19¹/₈" (48.6cm)
 Dimension tolerance = ±¹/₄" (±0.64cm)

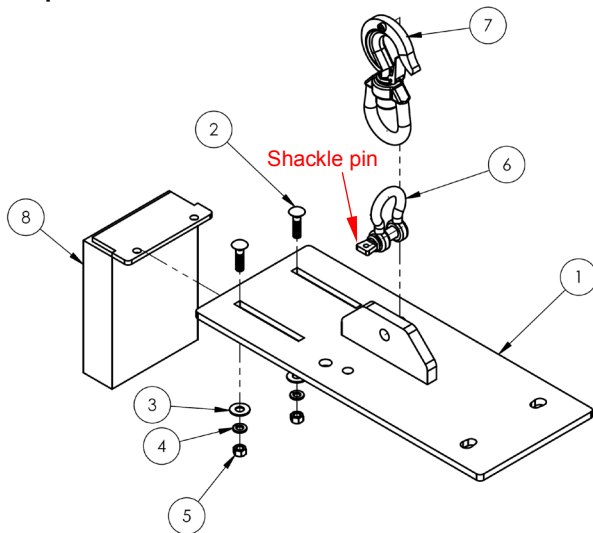


Exploded View and Bill of Materials: MINI-SH-2



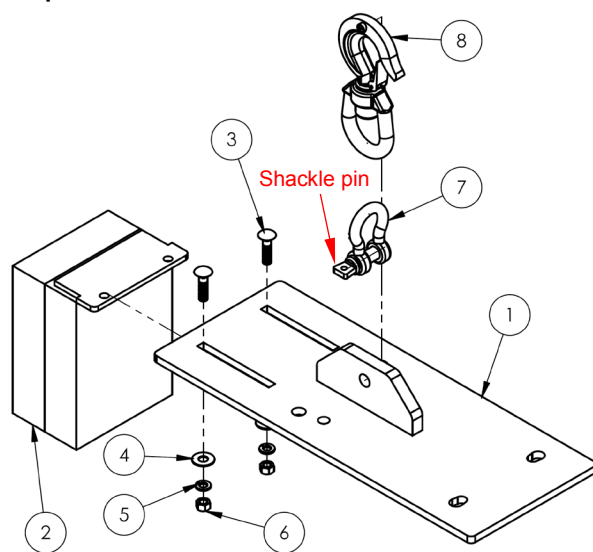
Item	Part no.	Description	Quantity
1	49-514-005	Weldment, adaptor plate	1
2	49-514-006	Weldment, counterweight	1
3	21355	Carriage bolt, round head, zinc finish, gr. A, $\frac{3}{8}$ " - 16 x 1"	2
4	33008	Flat washer, low carbon, USS, zinc plated, $\frac{3}{8}$ "	2
5	33622	Split lock washer, carbon, steel, medium zinc finish, $\frac{3}{8}$ "	2
6	36106	Hex nut, gr. A, zinc plated, $\frac{3}{8}$ " - 16	2
7	08-145-010	Shackle, $\frac{1}{2}$ ", 2-ton	1
8	08-145-001	Swivel hook, 2-ton	1

Exploded View and Bill of Materials: MINI-SH-7



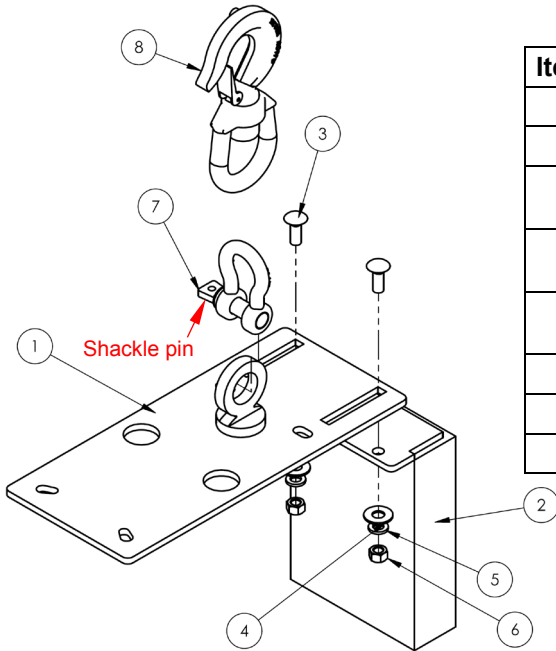
Item	Part no.	Description	Quantity
1	49-514-016	Weldment, adaptor plate	1
2	21359	Carriage bolt, round head, zinc finish, gr. A, $\frac{3}{8}$ " - 16 x $1\frac{1}{2}$ "	2
3	33008	Flat washer, low carbon, USS, zinc plated, $\frac{3}{8}$ "	2
4	33622	Split lock washer, carbon, steel, medium zinc finish, $\frac{3}{8}$ "	2
5	36106	Hex nut, gr. A, zinc plated, $\frac{3}{8}$ " - 16	2
6	08-145-010	Shackle, $\frac{1}{2}$ ", 2-ton	1
7	08-145-001	Swivel hook, 2-ton	1
8	49-514-006	Weldment, counterweight	1

Exploded View and Bill of Materials: MINI-SH-10



Item	Part no.	Description	Quantity
1	49-514-016	Weldment, adaptor plate	1
2	49-514-017	Weldment, counterweight	1
3	21359	Carriage bolt, round head, zinc finish, gr. A, $\frac{3}{8}$ " - 16 x $1\frac{1}{2}$ "	2
4	33008	Flat washer, low carbon, USS, zinc plated, $\frac{3}{8}$ "	2
5	33622	Split lock washer, carbon, steel, medium zinc finish, $\frac{3}{8}$ "	2
6	36106	Hex nut, gr. A, zinc plated, $\frac{3}{8}$ " - 16	2
7	08-145-010	Shackle, $\frac{1}{2}$ ", 2-ton	1
8	08-145-001	Swivel hook, 2-ton	1

Exploded View and Bill of Materials: MINI-SH-4



Item	Part no.	Description	Quantity
1	49-514-005	Weldment, adaptor plate	1
2	49-514-006	Weldment, counterweight	1
3	21355	Carriage bolt, round head, zinc finish, gr. A, $\frac{3}{8}$ " - 16 x 1"	2
4	33008	Flat washer, low carbon, USS, zinc plated, $\frac{3}{8}$ "	2
5	33622	Split lock washer, carbon, steel, medium zinc finish, $\frac{3}{8}$ "	2
6	36106	Hex nut, gr. A, zinc plated, $\frac{3}{8}$ " - 16	2
7	08-145-010	Shackle, $\frac{1}{2}$ ", 2-ton	1
8	08-145-001	Swivel hook, 2-ton	1

LABELING DIAGRAM

Label content and location are subject to change so your product might not be labeled exactly as shown. Compare the diagram below to your *Record of Satisfactory Condition*. If there are any differences between actual labeling and this diagram, contact *Technical Service*. Contact information is provided on the cover page of this manual.

Replace all labels that are damaged, missing, or not easily readable (e.g. faded) from a reasonable distance. To order replacement labels, or to inquire whether your unit is properly labeled, contact the technical service and parts department online at http://www.vestilmfg.com/parts_info.htm or by calling (260) 665-7586 and asking for the Parts Department.



Tag 1041: Safety statements; attached to control cord near handheld controller

⚠ DANGER	⚠ WARNING
<p>DISCONNECT POWER & LOCKOUT / TAGOUT DISCONNECTING MEANS BEFORE REMOVING COVER OR SERVICING THIS EQUIPMENT.</p> <p>DO NOT OPERATE THIS HOIST WITHOUT COVER IN PLACE.</p>	<p>Improper or careless use of this device could result in serious personal injury or death.</p> <ul style="list-style-type: none"> • DO NOT use hoist before reading entire manual • DO NOT lift loads weighing more than rated load / capacity • DO NOT exceed rated load of crane, this hoist, or rigging, whichever is smallest • Avoid load swing! DO NOT operate hoist UNLESS load is centered under hoist • DO NOT operate hoist with twisted, kinked, or damaged chain/rope • DO NOT use the hoist or trolley if either is damaged or malfunctioning • DO NOT use without normally functioning hook latch • DO NOT use this hoist to lift people • DO NOT lift loads over people • DO NOT remove or obscure any label / tag attached to this hoist • DO NOT use load chain as a sling • DO NOT side load the hook • DO NOT leave suspended loads unattended
○	1041

Model No. _____	Serial No. _____
No. Modelo _____	No. Serie _____
Capacity _____ lbs.	Lifter Weight _____ lbs.
Capacidad _____ kgs.	Peso del Elevador _____ kgs.
<p>Read Owners Manual for product safety warnings Lea Manual de Propietarios para advertencias de seguridad de producto</p>	
○	

LIMITED WARRANTY

Vestil Manufacturing Corporation (“Vestil”) warrants this product to be free of defects in material and workmanship during the warranty period. Our warranty obligation is to provide a replacement for a defective, original part covered by the warranty after we receive a proper request from the Warrantee (you) for warranty service.

Who may request service?

Only a warrantee may request service. You are a warrantee if you purchased the product from Vestil or from an authorized distributor AND Vestil has been fully paid.

Definition of “original part”?

An original part is a part used to make the product as shipped to the Warrantee.

What is a “proper request”?

A request for warranty service is proper if Vestil receives: 1) a photocopy of the Customer Invoice that displays the shipping date; AND 2) a written request for warranty service including your name and phone number. Send requests by one of the following methods:

<u>US Mail</u>	<u>Fax</u>	<u>Email</u>
Vestil Manufacturing Corporation 2999 North Wayne Street, PO Box 507 Angola, IN 46703	(260) 665-1339 <u>Phone</u> (260) 665-7586	info@vestil.com Enter “Warranty service request” in the subject field.

In the written request, list the parts believed to be defective and include the address where replacements should be delivered. After Vestil receives your request for warranty service, an authorized representative will contact you to determine whether your claim is covered by the warranty. Before providing warranty service, Vestil will require you to send the entire product, or just the defective part (or parts), to its facility in Angola, IN.

What is covered under the warranty?

The warranty covers defects in the following original, dynamic parts: motors, hydraulic pumps, motor controllers, and cylinders. It also covers defects in original parts that wear under normal usage conditions (“wearing parts”), such as bearings, hoses, wheels, seals, brushes, and batteries.

How long is the warranty period?

The warranty period for original dynamic components is 30 days. For wearing parts, the warranty period is 30 days. Both warranty periods begin on the date Vestil ships the product to the Warrantee. If the product was purchased from an authorized distributor, the periods begin when the distributor ships the product. Vestil may, at its sole discretion, extend a warranty period for products shipped from authorized distributors by up to 30 days to account for shipping time.

If a defective part is covered by the warranty, what will Vestil do to correct the problem?

Vestil will provide an appropriate replacement for any *covered* part. An authorized representative of Vestil will contact you to discuss your claim.

What is not covered by the warranty?

The Warrantee (you) is responsible for paying labor costs and freight costs to return the product to Vestil for warranty service.

Events that automatically void this Limited Warranty.

- Misuse;
- Negligent assembly, installation, operation or repair;
- Installation/use in corrosive environments;
- Inadequate or improper maintenance;
- Damage sustained during shipping;
- Collisions or other accidents that damage the product;
- Unauthorized modifications: Do not modify the product IN ANY WAY without first receiving written authorization from Vestil.

Do any other warranties apply to the product?

Vestil Manufacturing Corp. makes no other express warranties. All implied warranties are disclaimed to the extent allowed by law. Any implied warranty not disclaimed is limited in scope to the terms of this Limited Warranty. Vestil makes no warranty or representation that this product complies with any state or local design, performance, or safety code or standard. Noncompliance with any such code or standard is not a defect in material or workmanship.

